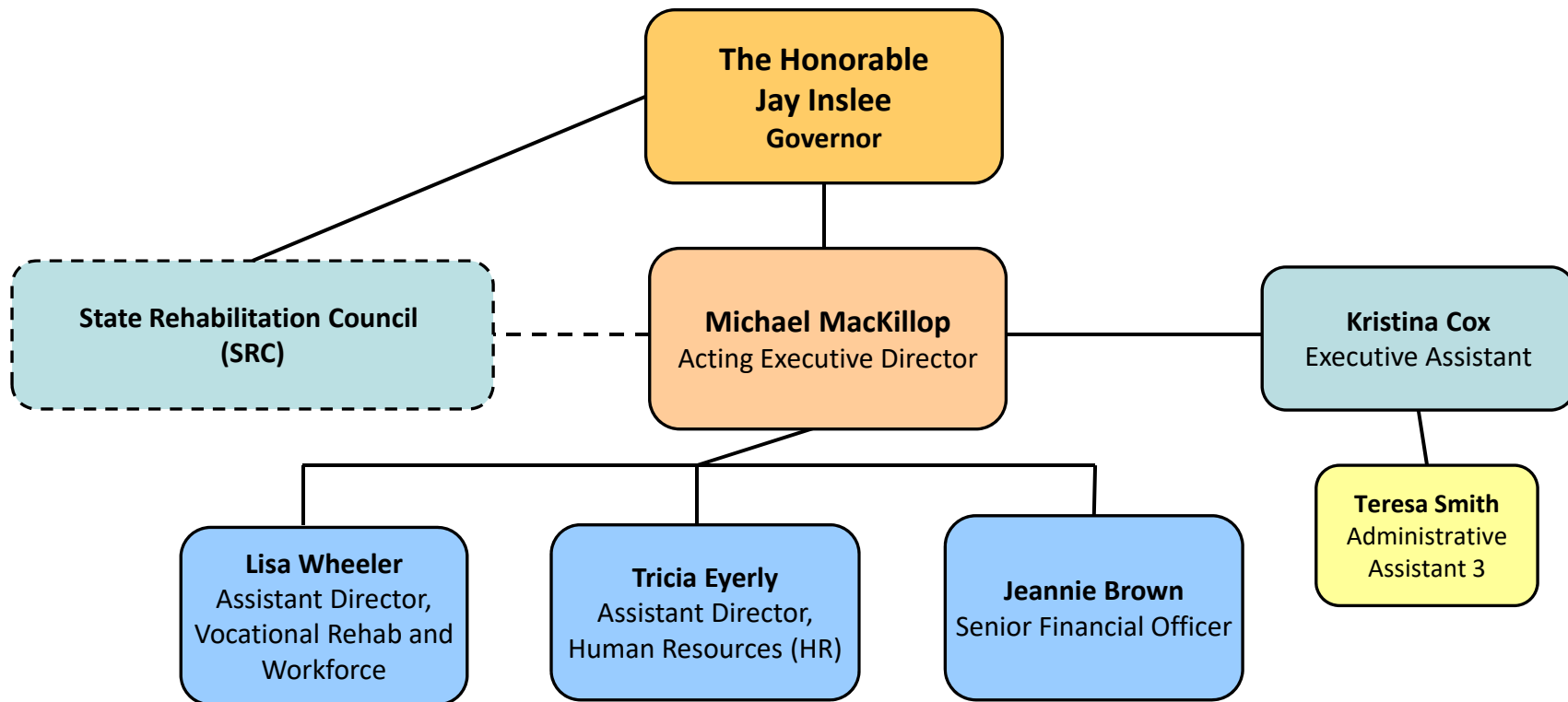


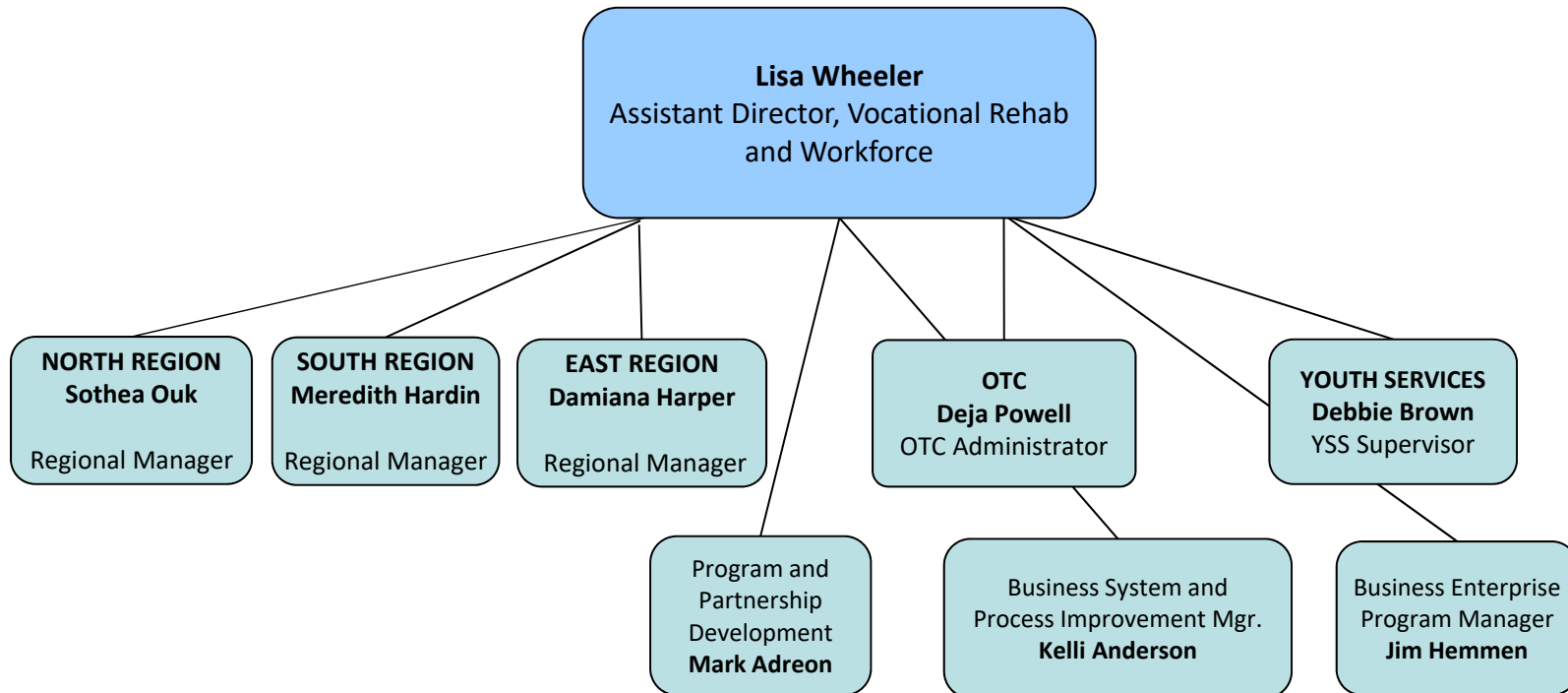


# WASHINGTON STATE DEPARTMENT OF SERVICES FOR THE BLIND



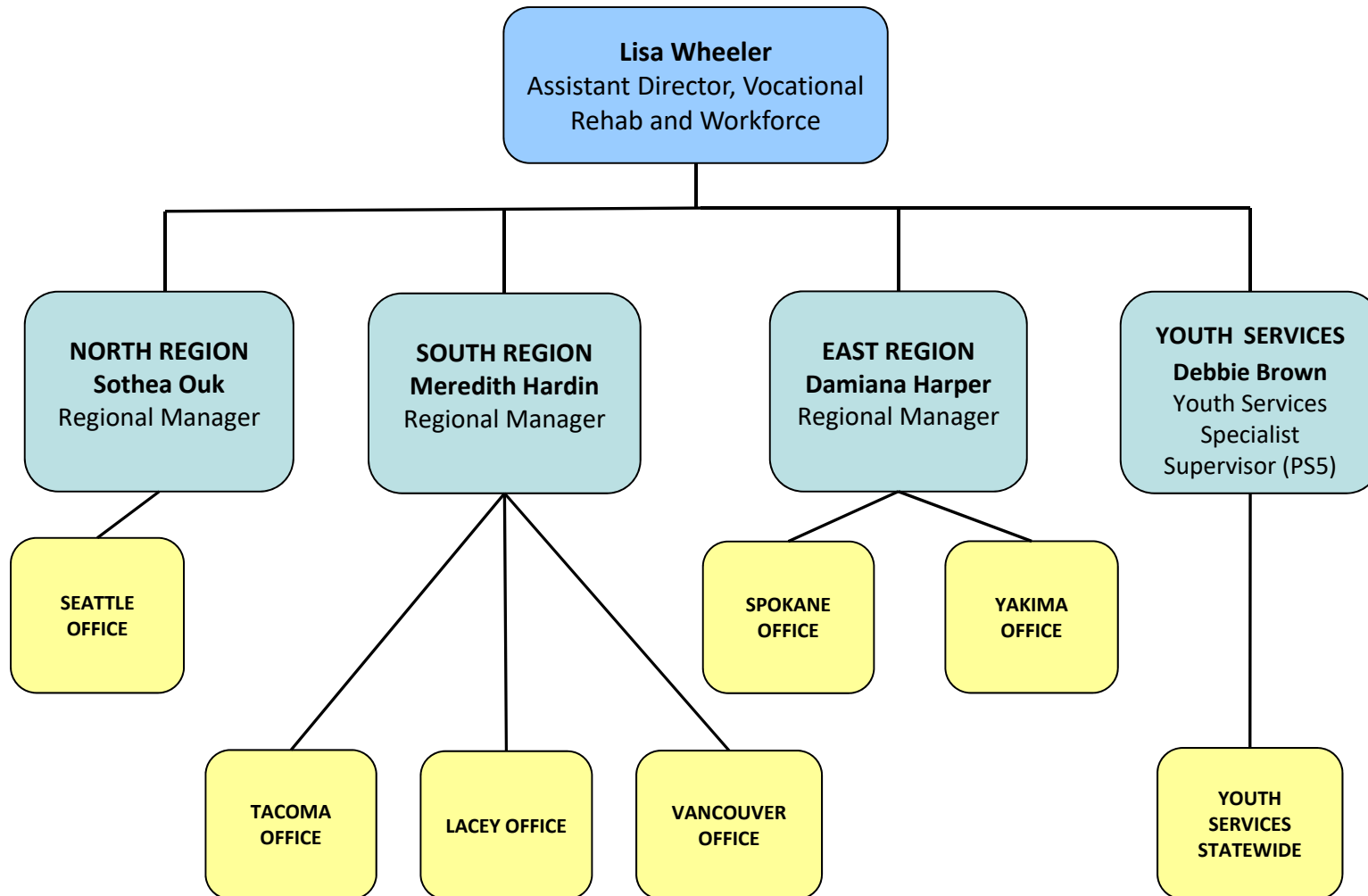


## DEPARTMENT OF SERVICES FOR THE BLIND CUSTOMER SERVICES (CS) AND BUSINESS SERVICES (BS)



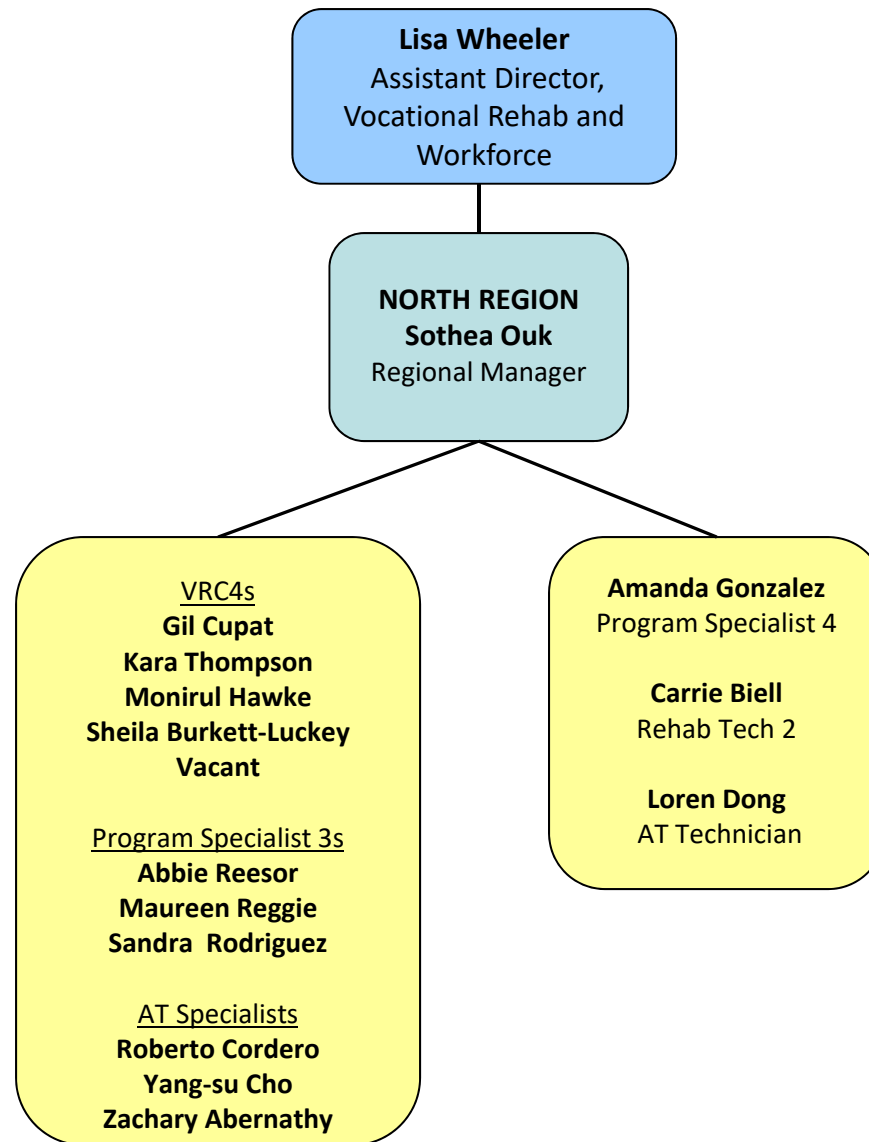


## DEPARTMENT OF SERVICES FOR THE BLIND CUSTOMER SERVICES (CS)—FIELD SERVICES



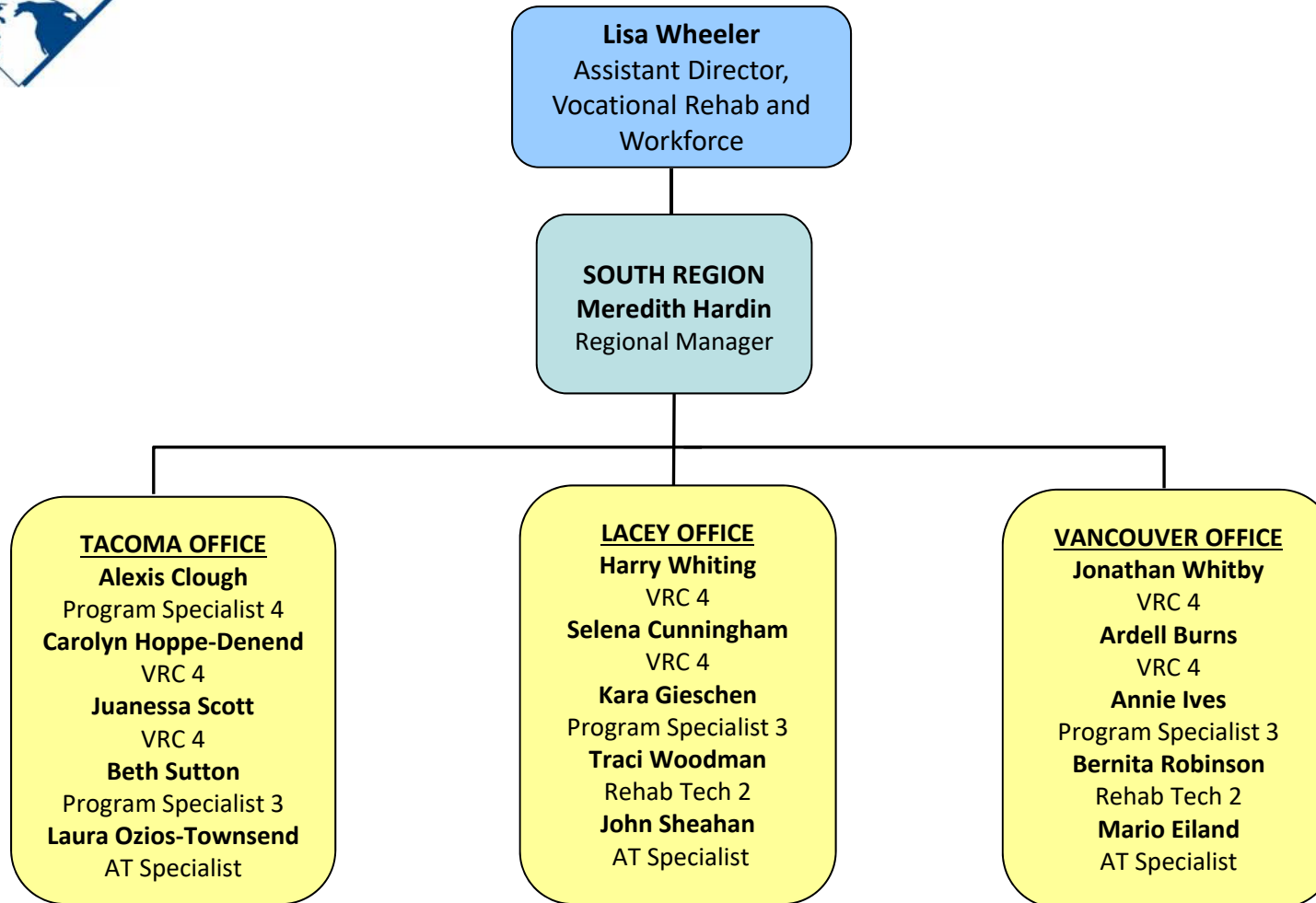


## **DEPARTMENT OF SERVICES FOR THE BLIND CUSTOMER SERVICES (CS)—FIELD SERVICES**



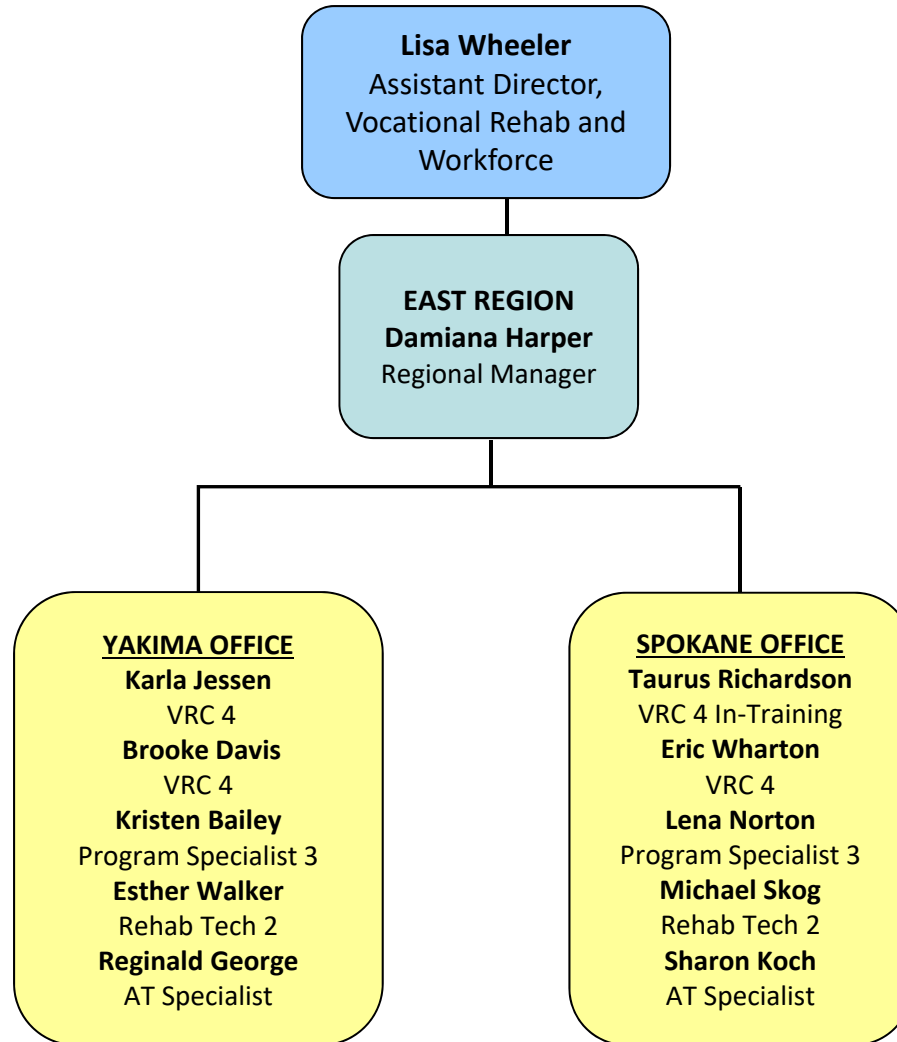


## DEPARTMENT OF SERVICES FOR THE BLIND CUSTOMER SERVICES (CS)—FIELD SERVICES



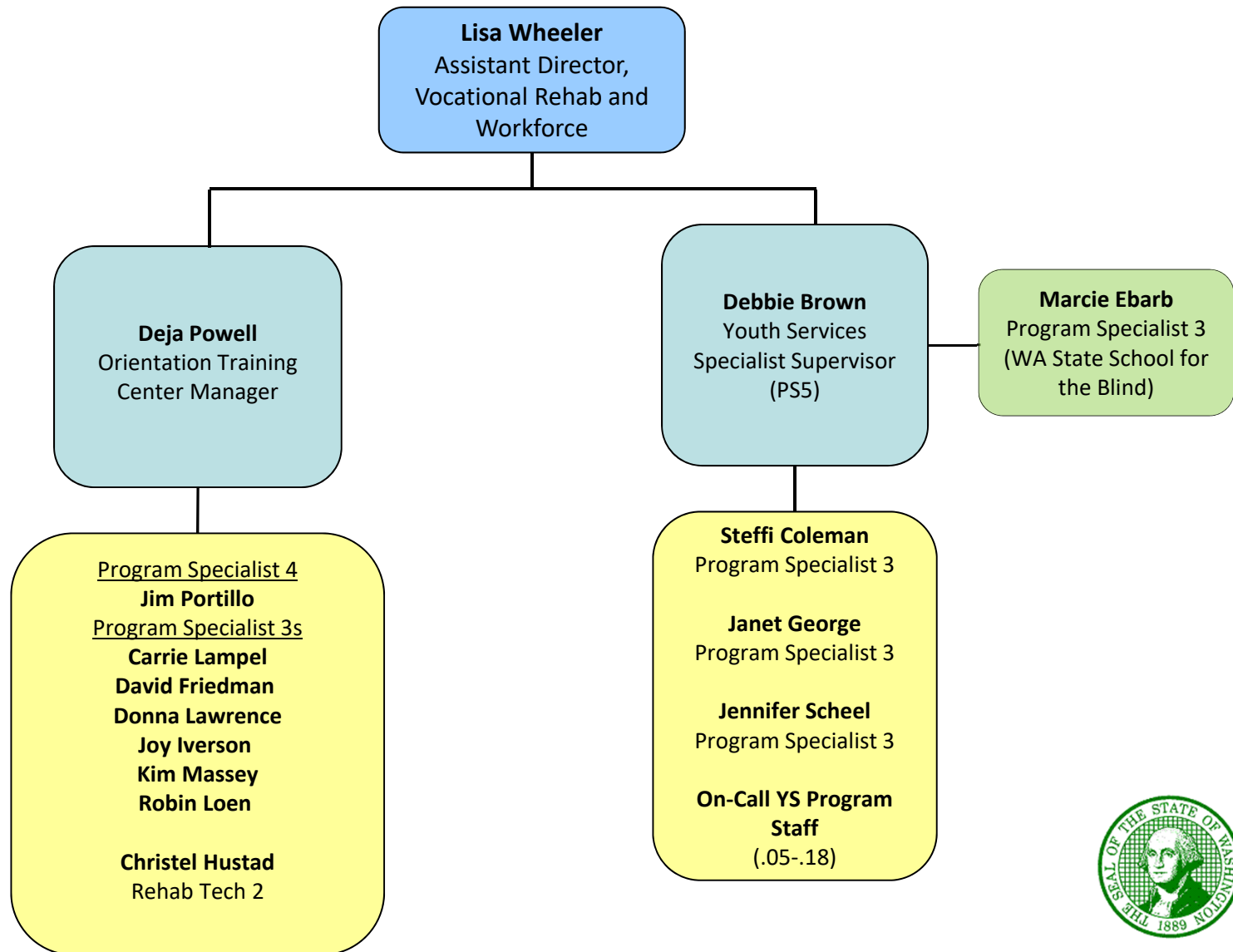


## **DEPARTMENT OF SERVICES FOR THE BLIND CUSTOMER SERVICES (CS)—FIELD SERVICES**



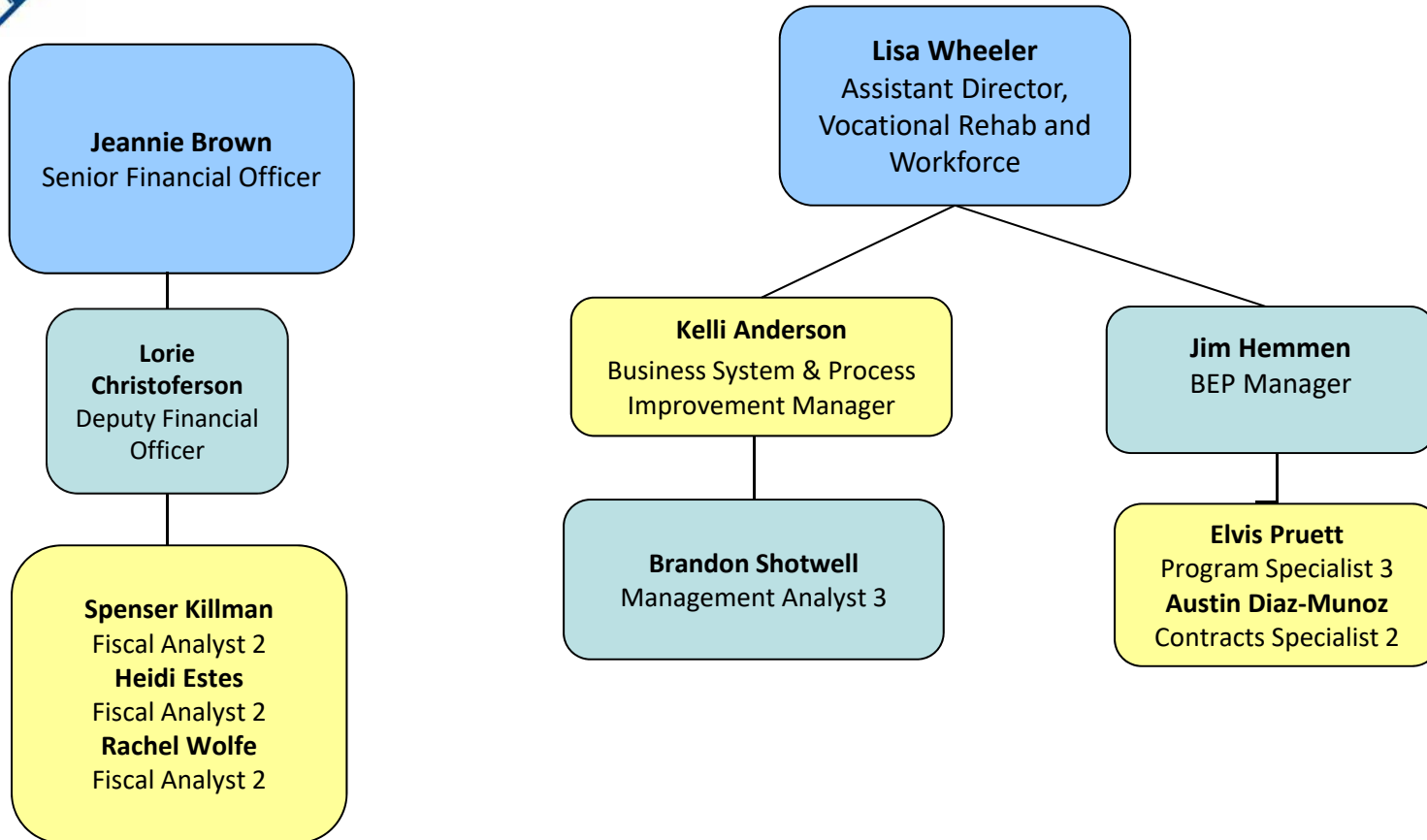


## DEPARTMENT OF SERVICES FOR THE BLIND CUSTOMER SERVICES (CS)





## DEPARTMENT OF SERVICES FOR THE BLIND BUSINESS SERVICES (BS)







## DEPARTMENT OF SERVICES FOR THE BLIND OPERATIONS AND HUMAN RESOURCES (HR)

